



SHOES
FOR CREWS™

STEP
INTO
ACTION™



2024

**THE ORIGINAL SLIP-
RESISTANT FOOTWEAR
SINCE 1984.**

SAFETY. FASHION. COMFORT.



SAFETY | FASHION | COMFORT IS MORE THAN A PROMISE. IT'S OUR PASSION.

We live and work to craft safe, attractive and comfortable shoes to make work life that much easier. See for yourself...

OUR PASSION

Shoes For Crews is synonymous with comfort & slip resistance. As pioneers in slip-resistant outsole technology with almost 40 years of experience, we offer a wide range of high-quality footwear combining smart, trendy styles with optimum comfort.

Our mission is to keep the workforce safe on the job with comfortable, quality protective footwear solutions – reducing accidents and saving money.

Shoes For Crews has more than 500 employees in the USA, Europe and China, and has its own logistics centres in the USA, Canada, UK, and the Netherlands. Personnel in over 150,000 companies around the world rely on the safety and protection afforded by our footwear.

We design and manufacture one of the largest and most comprehensive ranges of slip-resistant footwear. With over 280 styles for men and women – from sporty, casual and smart to safety footwear and specialist footwear for emergency personnel/operatives and the military.

Our footwear, engineered with a unique slip-resistant outsole, is sold in over 40 countries. Today, Shoes For Crews markets its own brands SFC, SFC PRO, Mozo, and Lila.

CONTENTS

| | |
|----|--|
| 04 | Product overview |
| 06 | Step into action: SFC PRO |
| 08 | Our product pledge |
| 10 | Our outsole technologies |
| 14 | Reducing our ecological footprint |
| 16 | M.A.P.S. Shoes for military, ambulance, police, security |
| 22 | Safety shoes |
| 28 | Athletic shoes |
| 32 | Casual shoes |
| 36 | Dress shoes |
| 42 | Wellingtons |
| 44 | Overshoes |
| 46 | Accessories |
| 48 | Mats |
| 50 | Purchasing tips |



PRODUCT OVERVIEW

STYLE MEN WOMEN UNISEX PAGE CATEGORY       

M.A.P.S. | SHOES FOR MILITARY, AMBULANCE, POLICE, SECURITY

| Style | Men | Women | Unisex | Page | Category | Icon 1 | Icon 2 | Icon 3 | Icon 4 | Icon 5 | Icon 6 |
|--------------|-----|-------|--------|------|--------------------|--------|--------|--------|--------|--------|--------|
| Beltra | ■ | | | 18 | 06 SR ESD | | | | | ■ | |
| Callan Low | ■ | | | 19 | 06 HI CI SR ESD LG | | | | | ■ | |
| Callan Mid | ■ | | | 19 | 06 HI CI SR ESD LG | | | | | ■ | |
| Cambridge GL | ■ | | | 18 | 02 SR ESD | | | | | ■ | |
| Carrig Low | ■ | | | 18 | 06 HI CI SR ESD LG | | | | | ■ | |
| Carrig Mid | ■ | | | 18 | 06 HI CI SR ESD LG | | | | | ■ | |
| Darver | ■ | | | 20 | 06 HI CI HRO SR LG | | | | | ■ | |
| Defense Mid | ■ | | | 17 | 06 HRO SR ESD LG | | | | | ■ | |
| Defense High | ■ | | | 17 | 06 HRO SR ESD LG | | | | | ■ | |
| Delvin | ■ | | | 20 | S7L CI SR | | | | | ■ | ■ |
| Guard Mid | ■ | | | 21 | S7L HRO SR ESD LG | | | | | ■ | ■ |
| Guard High | ■ | | | 21 | S7L HRO SR ESD LG | | | | | ■ | ■ |

SAFETY SHOES

| | | | | | | | | | | | |
|--------------------------|-----|---|--|----|-------------------|---|---|---|---|--|---|
| Barra | ■ □ | | | 25 | S3L FO SR LG | ■ | ■ | ■ | ■ | | ■ |
| Bergamo | ■ | | | 24 | S3L HRO FO SR ESD | ■ | ■ | ■ | ■ | | ■ |
| Bonnie | | ■ | | 23 | S3L FO SR | ■ | ■ | ■ | ■ | | ■ |
| Brandon | ■ □ | | | 24 | S3L FO SR LG | ■ | ■ | ■ | ■ | | ■ |
| Cambridge II ST | ■ | | | 26 | S2 FO SR | ■ | ■ | ■ | ■ | | ■ |
| Catania | ■ □ | | | 25 | S3L HRO FO SR | ■ | ■ | ■ | ■ | | ■ |
| Clyde | ■ | | | 23 | S3L FO SR | ■ | ■ | ■ | ■ | | ■ |
| Colly | ■ | | | 24 | S3L FO SR | ■ | ■ | ■ | ■ | | ■ |
| Engineer IV CT | ■ | | | 26 | S7L SR LG | | ■ | ■ | ■ | | ■ |
| Executive Wing Tip II ST | ■ | | | 25 | S2 FO SR | | ■ | ■ | ■ | | ■ |
| Fergus | ■ □ | | | 23 | S3L FO SR | ■ | ■ | ■ | ■ | | ■ |
| Forkhill | ■ | | | 26 | S3L SR LG | | ■ | ■ | ■ | | ■ |
| Inny | □ | | | 27 | S3L FO SR | ■ | ■ | ■ | ■ | | ■ |

ATHLETIC SHOES

| | | | | | | | | | | | |
|----------------|-----|-----|--|----|--------------|---|---|---|---|---|---|
| Colly Soft Toe | ■ | | | 30 | OB E FO SR | | | ■ | ■ | ■ | ■ |
| Condor II | ■ □ | | | 29 | OB E SRC ESD | ■ | ■ | ■ | ■ | ■ | ■ |
| Endurance II | ■ | | | 30 | | ■ | ■ | ■ | ■ | ■ | ■ |
| Everlight | ■ □ | ■ □ | | 31 | | ■ | ■ | ■ | ■ | ■ | ■ |
| Evolution II | ■ □ | | | 30 | | ■ | ■ | ■ | ■ | ■ | ■ |
| Freestyle II | ■ □ | | | 29 | | ■ | ■ | ■ | ■ | ■ | ■ |
| Liberty II | | ■ □ | | 29 | | ■ | ■ | ■ | ■ | ■ | ■ |
| Revolution II | | ■ □ | | 30 | | ■ | ■ | ■ | ■ | ■ | ■ |
| Vitality II | ■ ■ | | | 30 | | ■ | ■ | ■ | ■ | ■ | ■ |

■ □ ■ ■ ■ ■ ■ ■ ■ ■
Colours available

-  Hospitality, Catering, Food Production
-  Public Transport, Postal & Courier Services
-  Retail
-  Facility Management
-  Healthcare
-  Emergency Services, Law Enforcement, Security and Military
-  Manufacturing and Heavy Duty

STYLE MEN WOMEN UNISEX PAGE CATEGORY       

CASUAL SHOES

| | | | | | | | | | | | | |
|---------------|---|-----|-----|----|----------|---|---|---|---|---|---|--|
| Cater II | ■ | ■ | | 35 | OB E SR | | ■ | | | | | |
| Delray | | | ■ | 34 | | ■ | ■ | ■ | ■ | | | |
| Finn | ■ | | | 35 | OB E SRC | ■ | ■ | ■ | ■ | | | |
| Grind | □ | | | 35 | OB E SRC | ■ | ■ | ■ | ■ | | | |
| Jasmine | | ■ | | 34 | | ■ | ■ | ■ | | ■ | | |
| Karina | | ■ □ | | 34 | | ■ | ■ | ■ | ■ | | ■ | |
| Maven | | □ | | 35 | OB E SRC | ■ | ■ | ■ | ■ | | | |
| Mavi | | ■ | | 35 | OB E SRC | ■ | ■ | ■ | ■ | | | |
| Merlin | | | ■ | 35 | | ■ | ■ | ■ | | | | |
| Old School IV | | | ■ □ | 33 | OB E SR | ■ | ■ | ■ | ■ | ■ | | |
| Radium | | | ■ | 33 | OB E SR | ■ | | | ■ | ■ | | |
| Saloon II | ■ | ■ | | 34 | OB E SR | ■ | ■ | ■ | ■ | | | |
| Triston II | | | ■ □ | 33 | OB E SR | ■ | | | ■ | ■ | | |
| Triston II SB | | | ■ □ | 33 | SB E SR | ■ | ■ | | ■ | ■ | | |
| Zinc | | | ■ □ | 33 | OB E SR | ■ | | | ■ | ■ | | |

DRESS SHOES

| | | | | | | | | | | | | |
|-----------------------|-----|---|-----|----|--------|--|---|---|---|---|--|---|
| Ambassador II | ■ | | | 38 | OB SR | | ■ | ■ | ■ | | | ■ |
| Aristocrat IV | ■ | | | 40 | OB SR | | ■ | ■ | ■ | | | ■ |
| Cambridge III | ■ | | | 37 | OB SR | | ■ | ■ | ■ | ■ | | ■ |
| Envy III | | | ■ ■ | 41 | OB SR | | ■ | ■ | | | | ■ |
| Executive Wing Tip IV | ■ | | | 37 | OB SR | | ■ | ■ | ■ | | | ■ |
| Jenni | | ■ | | 41 | OB SR | | ■ | ■ | | | | ■ |
| Kora | | ■ | | 41 | | | ■ | ■ | | | | ■ |
| Madison III | | ■ | | 39 | OB SR | | ■ | ■ | ■ | ■ | | ■ |
| Mary Jane II | | ■ | | 37 | OB SR | | ■ | ■ | ■ | | | ■ |
| Reese | | ■ | | 39 | OB SRC | | ■ | ■ | ■ | ■ | | ■ |
| Senator | ■ ■ | | | 38 | | | ■ | ■ | | | | ■ |
| Statesman | ■ | | | 40 | | | ■ | ■ | | | | ■ |
| Willa | | ■ | | 38 | OB SR | | ■ | ■ | | | | ■ |

WELLINGTONS

| | | | | | | | | | | | | |
|----------|--|--|-------|----|-----------|--|---|---|--|---|--|---|
| Bastion | | | ■ □ | 43 | S4 SRC FO | | ■ | ■ | | ■ | | ■ |
| Guardian | | | ■ □ | 43 | S4 SRC FO | | ■ | ■ | | ■ | | ■ |
| Sentinel | | | ■ ■ □ | 43 | S4 SRC FO | | ■ | ■ | | ■ | | ■ |

OVERSHOES

| | | | | | | | | | | | | |
|--------------------|--|--|---|----|----------------------|--|---|--|---|---|--|---|
| Crewguard® Stretch | | | ■ | 45 | SR FO | | ■ | | ■ | ■ | | ■ |
| Crewguard® Safety | | | ■ | 45 | SR FO Toe-Protection | | ■ | | ■ | ■ | | ■ |

ACCESSORIES

| | | | | | | | | | | | | |
|----------------|--|--|--|----|--|--|--|--|--|--|--|--|
| Insoles, socks | | | | 47 | | | | | | | | |
| Mats | | | | 49 | | | | | | | | |

STEP INTO ACTION



FOCUSED ON THE INDUSTRIAL SECTOR – OUR SPECIAL-PURPOSE BRAND: SFC PRO.

STEP INTO ACTION:

We continuously aim to advance not only our technology and expertise but also the industries we serve. We are proud to introduce the brand SFC PRO. With a focus on the industrial sector, SFC PRO has been designed with the unique challenges of those working in the field in mind.

Our industrial brand, SFC PRO, supports safety and comfort throughout your workday, no matter what surprises it may hold.

SFC PRO SHOE STYLES CAN BE FOUND ACROSS THE FOLLOWING PRODUCT CATEGORIES:

Safety Shoes, M.A.P.S. (Military, Ambulance, Police, Security), and Wellingtons.



SAFETY



M.A.P.S.



WELLINGTONS



WHY? PRECISELY



“BECAUSE WE WANT EVERYONE TO START THEIR DAY FEELING GOOD AND STANDING FIRMLY ON THEIR OWN TWO FEET.”

THE OUTSOLE? BETTER THAN JUST GOOD. OTHER COMFORTS? EXACTLY THE SAME.

TRIPGUARD – TO HELP REDUCE FALLS

Large lugs on the front of the shoe can cause a trip hazard so we developed TripGuard. Thanks to the slight bend and narrow lug profile, you can easily move between slippery surfaces, carpets and runners.

SPILLGUARD – TO PROTECT AGAINST SPILLS

If you handle liquids in the workplace, your feet need splash protection. That's why we have incorporated a membrane in many designs to keep the forefoot dry.

LIGHTWEIGHT – AS LIGHT AS A FEATHER ON YOUR FEET

Our shoes are particularly light thanks to the foam composite we use. This technology makes every step 100 grams lighter. Calculated over an 8-hour shift, this brings enormous relief for your legs and joints.

EASY CLEAN

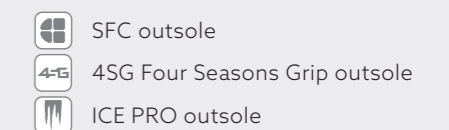
Easy cleaning is a key feature of our footwear designs: The materials and coatings we use help to keep your footwear looking tip-top and well cared for with little maintenance required.



Our mission:
MAXIMUM COMFORT WITH EVERY STEP.



SAFETY SYMBOLS AND PRODUCT FEATURES IN THIS CATALOGUE



OVERVIEW: OUR OUTSOLE TECHNOLOGIES.



SAFE GRIP WITH EVERY STEP — OUTSOLE TECHNOLOGIES THAT CAN BE RELIED ON.



THE SFC OUTSOLE

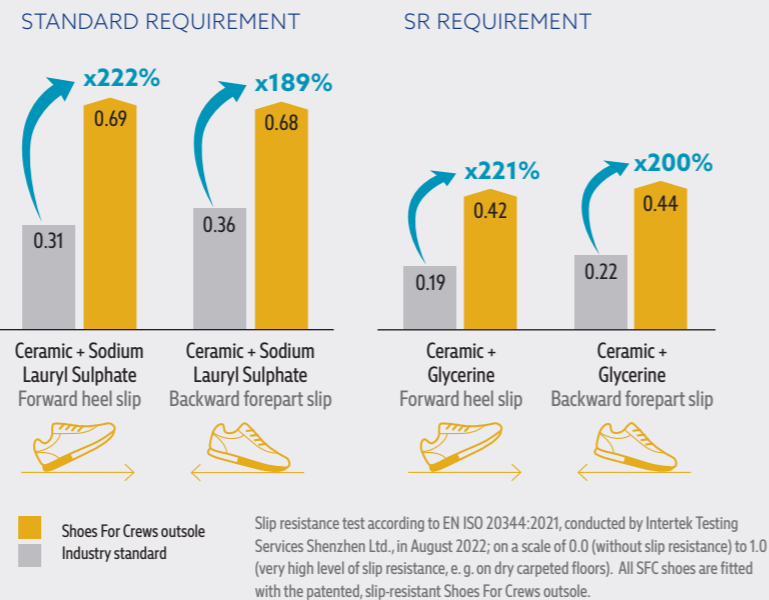
Whether in hospitality, healthcare, or retail, wet or oily surfaces can quickly become a hazard for workers throughout the day.

Here, the trusted SFC outsole provides safety with every step. As the tests below demonstrate, its excellent slip-resistance far exceeds the industry standard. This effectively helps prevent workplace accidents caused by slipping or falling.



Wet or oily ceramic tiles can quickly become a slipping hazard. The SFC outsole provides grip and excellent slip resistance.

TESTING THE SLIP RESISTANCE OF OUR SFC OUTSOLE [EN ISO 20344:2021]



THE ICE PRO OUTSOLE

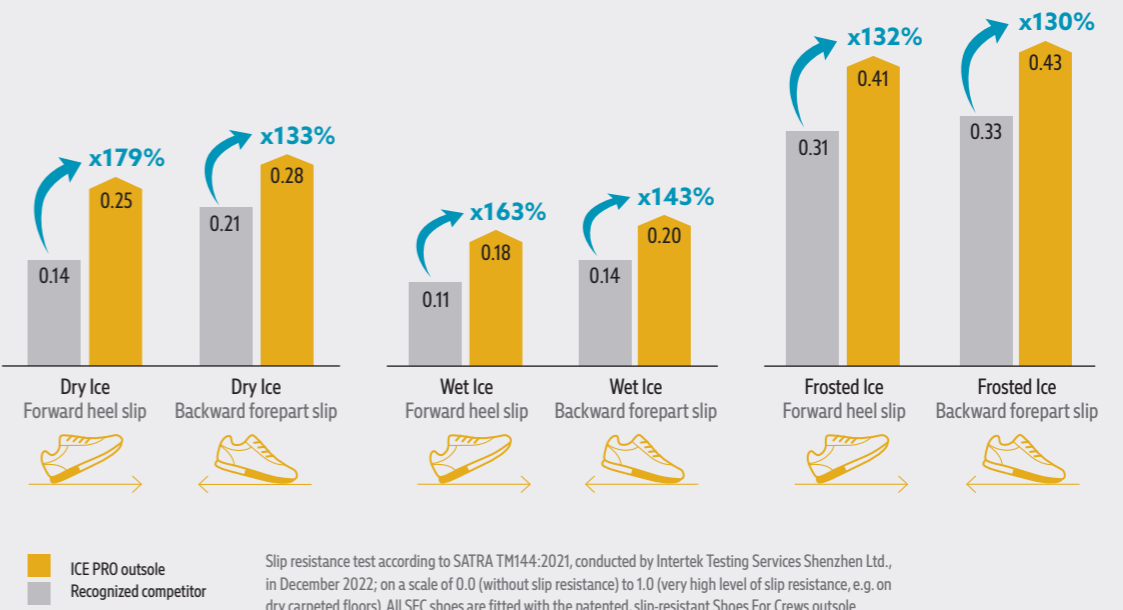
Slushy snow and wet or frozen ice are extremely unfavourable conditions for safe work. That's precisely why we've developed the ICE PRO outsole:

With its unique structure and sophisticated material blend, it provides superior slip resistance on icy surfaces when compared with the competition.



The structure and material compound of the ICE PRO outsole provide high levels of slip-resistance, particularly on icy surfaces.

TESTING THE SLIP RESISTANCE OF OUR ICE PRO OUTSOLE ON ICE [SATRA TM144:2021]



OVERVIEW: OUR OUTSOLE TECHNOLOGIES



THE 4SG OUTSOLE

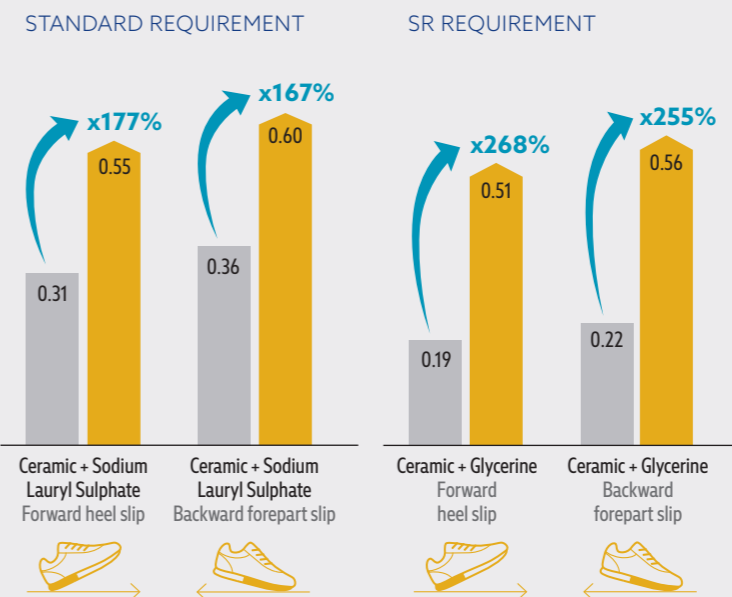
Prevent accidents on wet, icy, and oily surfaces: Our 4SG Four Seasons Grip outsole is specifically designed for challenging surfaces and environments – across all seasons and weather conditions.

It meets the DIN ISO 20344:2021 standard and surpasses the industry standard in terms of slip-resistance and safety. As the results on the following page demonstrate, this outsole offers exceptional slip-resistance properties – even on ice!

The 4SG outsole: Safe grip in any weather.



TESTING THE SLIP RESISTANCE OF OUR 4SG FOUR SEASONS GRIP OUTSOLE [EN ISO 20344:2021]

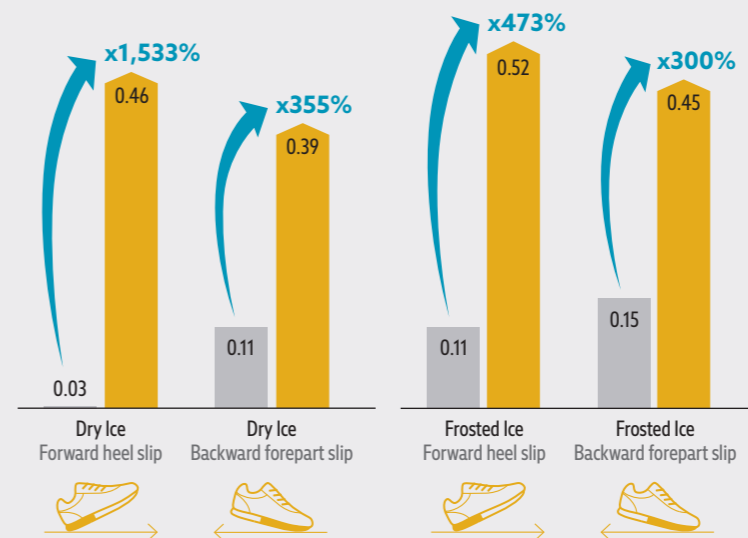


The 4SG outsole excels in extreme conditions: It provides a high level of protection on wet, muddy, snowy, and oily surfaces.

4SG outsole
Recognized competitor

Slip resistance test according to EN ISO 20344:2021, conducted by Intertek Testing Services Shenzhen Ltd., in December 2022; on a scale of 0.0 (without slip resistance) to 1.0 (very high level of slip resistance, e.g. on dry carpeted floors). All SFC shoes are fitted with the patented, slip-resistant Shoes For Crews outsole.

TESTING THE SLIP RESISTANCE OF OUR 4SG FOUR SEASONS GRIP OUTSOLE ON ICE [SATRA TM144:2021]



4SG outsole
Recognized competitor

Slip resistance test according to SATRA TM144:2021, conducted by Intertek Testing Services Shenzhen Ltd., in December 2022; on a scale of 0.0 (without slip resistance) to 1.0 (very high level of slip resistance, e.g. on dry carpeted floors). All SFC shoes are fitted with the patented, slip-resistant Shoes For Crews outsole.

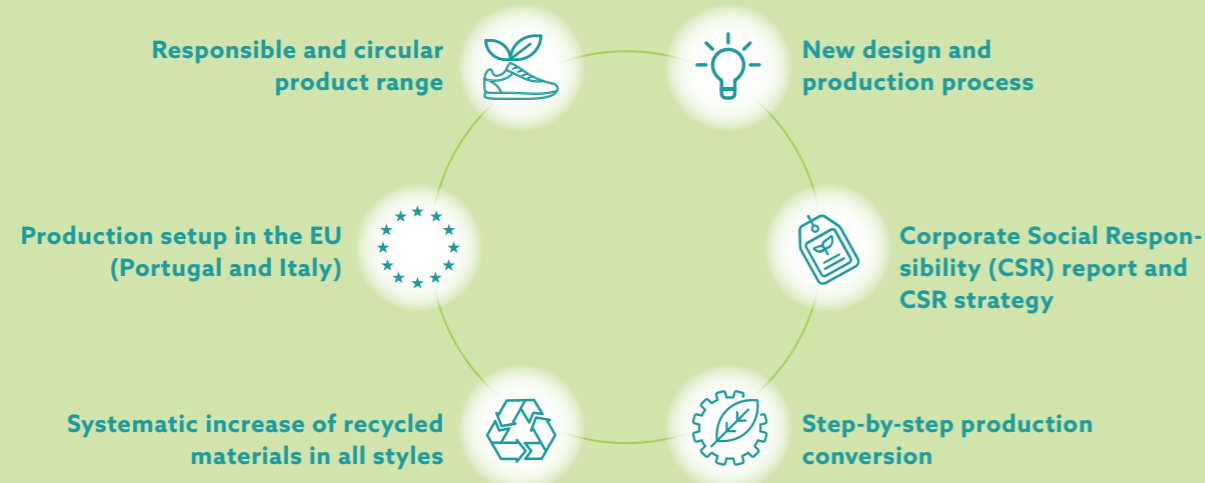
OUR FOOTPRINT IS GETTING NOTICEABLY SMALLER.

WE ARE REDUCING THE ECOLOGICAL FOOTPRINT OF OUR SHOES

Our world is changing, so we can't stand still. To be ready for the future, Shoes For Crews are developing new materials and production methods to decrease their environmental footprint, step by step.



OUR STRATEGY FOR SUSTAINABLE PRODUCTS:



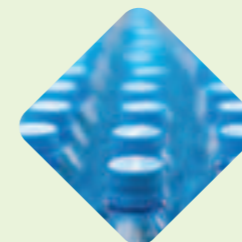
IMPROVEMENTS TO SUSTAINABLE PRODUCTION AND OUR RESPONSIBLE USE OF RESOURCES.

OUR GOAL: LEADING THE WAY THROUGH INNOVATION AND DEDICATION

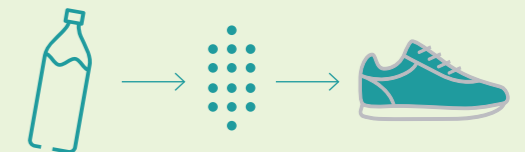
Rather than just changing individual styles, we are gradually changing our whole production process and the materials we use.



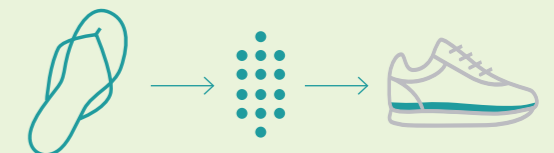
HOW DOES RECYCLING WORK?



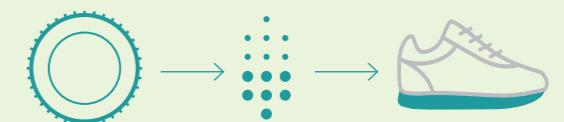
PET bottles are converted to a granulate which we use to manufacture, among other things, a new **inner lining** for our shoes.



The **EVA material** from old flipflops is granulated and recycled to produce new **insoles**.



Old **tyres** are separated into their constituent materials, and the rubber processed into granulate or powder form. From this, we make components for our new **outsoles**.



M.A.P.S. | SHOES FOR MILITARY, AMBULANCE, POLICE, SECURITY



READY FOR USE AT ANY TIME.
WITHOUT COMPROMISE.

Well equipped for use: When every second counts, solid and comfortable footwear is the be-all and end-all. Our footwear for military, ambulance, police and security (M.A.P.S.) give excellent levels of comfort with a highly slip-resistant outsole.



DEFENSE MID

Unisex: 62210 Black 3-13 (36-48)
EN ISO 20347:2022 [O6 HRO SR ESD LG]

- > Removable cushioned insole (recycled EVA)
- > Extra cushioning
- > Energy absorbing heel construction
- > Breathable and waterproof
- > Superior slip-resistant outsole with TripGuard
- > Heat resistant outsole up to 300 °C
- > Durable combination of coated leather and mesh
- > Recycled polyester lining
- > Metal-free, antistatic
- > Resistant to penetration by bloodborne pathogens
- > Sidezipper
- > 6" or 15.2 cm shaft height
- > Weight per shoe: 508 grams (based on size 39)



DEFENSE HIGH

Unisex: 62211 Black 3-13 (36-48)
EN ISO 20347:2022 [O6 HRO SR ESD LG]

- > Removable cushioned insole (recycled EVA)
- > Extra cushioning
- > Energy absorbing heel construction
- > Breathable and waterproof
- > Superior slip-resistant outsole with TripGuard
- > Heat resistant outsole up to 300 °C
- > Durable combination of coated leather and mesh
- > Recycled polyester lining
- > Metal-free, antistatic
- > Resistant to penetration by bloodborne pathogens
- > Sidezipper
- > 8" or 20.3 cm shaft height
- > Weight per shoe: 544 grams (based on size 39)





BELTRA

Unisex: 62208 Black 2.5-15 (35-50)

EN ISO 20347:2022 [O6 SR ESD]

- > Removable cushioned insole (recycled EVA)
- > Extra cushioning
- > Breathable
- > Superior slip-resistant outsole with TripGuard
- > Two-part outsole for more control and flexibility
- > Durable, waterproof combination of coated leather and mesh
- > Recycled polyester lining
- > Metal-free, antistatic
- > Resistant to penetration by bloodborne pathogens
- > Weight per shoe: 376 grams (based on size 42)



CALLAN LOW

Unisex: 62203 Black 2.5-13 (35-48)

EN ISO 20347:2022 [O6 HI CI SR ESD LG]

- > Removable cushioned insole (recycled EVA)
- > Extra cushioning
- > Superior slip-resistant outsole with TripGuard
- > Energy absorbing heel construction
- > Heat and cold insulation
- > Waterproof coated leather upper
- > Recycled polyester lining
- > Metal-free, antistatic
- > Resistant to penetration by bloodborne pathogens
- > Weight per shoe: 510 grams (based on size 43)



CARRIG LOW

Unisex: 62201 Black 2.5-13 (35-48)

EN ISO 20347:2022 [O6 HI CI SR ESD LG]

- > Removable cushioned insole (recycled EVA)
- > Extra cushioning, energy absorbing heel construction
- > Breathable
- > Superior slip-resistant outsole with TripGuard
- > Heat and cold insulation
- > Durable, waterproof combination of coated leather and mesh
- > Recycled polyester lining
- > Metal-free, antistatic
- > Resistant to penetration by bloodborne pathogens
- > Weight per shoe: 526 grams (based on size 43)



CALLAN MID

Unisex: 62204 Black 2.5-13 (35-48)

EN ISO 20347:2022 [O6 HI CI SR ESD LG]

- > Removable cushioned insole (recycled EVA)
- > Extra cushioning
- > Superior slip-resistant outsole with TripGuard
- > Energy absorbing heel construction
- > Heat and cold insulation
- > Waterproof coated leather upper
- > Recycled polyester lining
- > Metal-free, antistatic
- > Resistant to penetration by bloodborne pathogens
- > Weight per shoe: 585 grams (based on size 42)



CARRIG MID

Unisex: 62202 Black 2.5-13 (35-48)

EN ISO 20347:2022 [O6 HI CI SR ESD LG]

- > Removable cushioned insole (recycled EVA)
- > Extra cushioning, energy absorbing heel construction
- > Breathable
- > Superior slip-resistant outsole with TripGuard
- > Heat and cold insulation
- > Durable, waterproof combination of coated leather and mesh
- > Recycled polyester lining
- > Metal-free, antistatic
- > Resistant to penetration by bloodborne pathogens
- > Weight per shoe: 507 grams (based on size 39)

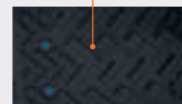


CAMBRIDGE GL

Unisex: 62207 Black 5-14 (38-49)

EN ISO 20347:2022 [O2 SR ESD]

- > Classic professional style
- > Removable cushioned insole (recycled EVA)
- > Padded comfort collar
- > Waterproof leather upper
- > Recycled polyester lining
- > Metal-free
- > Highly clog-resistant outsole for outdoor use
- > Weight per shoe: 360 grams (based on size 42)



Enjoy the comfort of our side-zipper: Step in and get out.





DELVIN

Unisex: 72211 Black 2.5-13 (35-48)

EN ISO 20345:2022 [S7L CI SR]

- > Removable cushioned insole (recycled EVA)
- > Extra cushioning, energy absorbing heel construction
- > Composite toe cap - 200 joules
- > 200 grams cold insulation
- > Puncture resistant
- > Superior slip-resistant outsole with TripGuard
- > Waterproof coated leather upper
- > Recycled polyester lining
- > Metal-free, antistatic
- > 8" or 20.3 cm shaft height
- > Weight per shoe: 793 grams (based on size 42)



GUARD MID

Unisex: 72237 Black 3-13 (36-48)

EN ISO 20345:2022 [S7L HRO SR ESD LG]

- > Removable cushioned insole (recycled EVA)
- > Extra cushioning, energy absorbing heel construction
- > Composite toe cap - 200 joules
- > Puncture resistant
- > Superior slip-resistant outsole with TripGuard
- > Heat resistant outsole up to 300 °C
- > Waterproof coated leather upper
- > Recycled polyester lining
- > Metal-free, antistatic
- > Resistant to penetration by bloodborne pathogens
- > Sidezipper
- > 6" or 15.2 cm shaft height
- > Weight per shoe: 746 grams (based on size 43)



DARVER

Unisex: 62209 Black 2.5-13 (35-48)

EN ISO 20347:2022 [O6 HI CI HRO SR ESD LG]

- > Removable cushioned insole (recycled EVA)
- > Extra cushioning, energy absorbing heel construction
- > Breathable
- > Superior slip-resistant outsole with TripGuard
- > Heat resistant outsole up to 300 °C
- > Durable, waterproof combination of coated leather and mesh
- > Recycled polyester lining
- > Metal-free, antistatic
- > Resistant to penetration by bloodborne pathogens
- > 9" or 22.8 cm shaft height
- > Weight per shoe: 618 grams (based on size 42)



GUARD HIGH

Unisex: 72238 Black 3-13 (36-48)

EN ISO 20345:2022 [S7L HRO SR ESD LG]

- > Removable cushioned insole (recycled EVA)
- > Extra cushioning, energy absorbing heel construction
- > Composite toe cap - 200 joules
- > Puncture resistant
- > Superior slip-resistant outsole with TripGuard
- > Heat resistant outsole up to 300 °C
- > Waterproof coated leather upper
- > Recycled polyester lining
- > Metal-free, antistatic
- > Resistant to penetration by bloodborne pathogens
- > Sidezipper
- > 8" or 20.3 cm shaft height
- > Weight per shoe: 775 grams (based on size 43)



SAFETY SHOES



SAFETY SHOES



FERGUS

Unisex: 78493 Black 3-13 (36-48)
79778 Denim 3-13 (36-48)

EN ISO 20345:2022 [S3L FO SR]

- > Regular fit
- > Removable cushioned insole (recycled EVA)
- > Composite toe cap - 200 joules
- > Superior slip- and clog-resistant outsole with TripGuard
- > Energy absorbing heel construction
- > Puncture resistant
- > Antistatic
- > Waterproof leather upper/denim
- > Recycled polyester lining
- > Resistant to fuel oil
- > Weight per shoe: 580 grams (based on size 44)



CLYDE MEN | BONNIE WOMEN

Men: 73403 Black 5-12 (38-47)
Women: 78393 Black 3-8 (36-42)

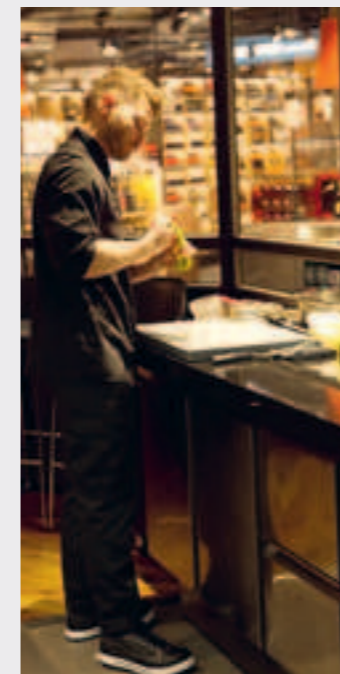
EN ISO 20345:2022 [S3L FO SR]

- > Regular fit
- > Removable cushioned insole (recycled EVA)
- > Composite toe cap - 200 joules
- > Superior slip- and clog-resistant outsole
- > Energy absorbing heel construction
- > Puncture resistant
- > Waterproof, recycled microfibre upper
- > Recycled polyester lining
- > Metal-free, antistatic
- > Resistant to fuel oil
- > Vegan
- > Weight per shoe: 555 grams (based on size 44)



HIGH LEVELS OF SAFETY AND COMFORT WITHOUT ANY COMPROMISES – OUR SAFETY SHOES WON'T LET YOU DOWN, NO MATTER HOW STRENUOUS YOUR WORKLOAD.

All safety models feature a toe cap made from either composite or steel, along with padded, removable insoles, and are equipped with one of our special outsole technologies.





BRANDON

Unisex: 76640 Black 3-13 (36-48)
76641 White 3-13 (36-48)

EN ISO 20345:2022 [S3L FO SR LG]

- > Regular fit
- > Removable cushioned insole (recycled EVA)
- > Superior slip- and clog-resistant outsole with TripGuard
- > Energy absorbing heel construction
- > Composite toe cap - 200 joules
- > Puncture resistant
- > Waterproof, recycled microfibre upper
- > Recycled polyester lining
- > Metal-free, antistatic
- > Resistant to fuel oil
- > Vegan
- > Weight per shoe: 585 grams (based on size 44)



BARRA

Unisex: 72503 Black 3-13 (36-48)
72504 White 3-13 (36-48)

EN ISO 20345:2022 [S3L FO SR LG]

- > Regular fit
- > Removable cushioned insole (recycled EVA)
- > Energy absorbing heel construction
- > Composite toe cap - 200 joules
- > Puncture resistant
- > Superior slip- and clog-resistant outsole with TripGuard
- > Waterproof, recycled microfibre upper
- > Recycled polyester lining
- > Metal-free, antistatic
- > Resistant to fuel oil
- > Vegan
- > Weight per shoe: 585 grams (based on size 44)



COLLY

Unisex: 75659 Black 3-13 (36-48)

EN ISO 20345:2022 [S3L FO SR]

- > Regular fit
- > Removable cushioned insole (recycled EVA)
- > Superior slip- and clog-resistant outsole with TripGuard
- > Energy absorbing heel construction
- > Composite toe cap - 200 joules
- > Puncture resistant
- > Waterproof, recycled microfibre upper
- > Recycled polyester lining
- > Metal-free, antistatic, vegan
- > Resistant to fuel oil
- > Weight per shoe: 540 grams (based on size 44)



EXECUTIVE WING TIP II ST

Men: 52181 Black 5-12 (38-47)

EN ISO 20345:2022 [S2 FO SR]

- > Removable cushioned insole (recycled EVA)
- > Energy absorbing heel construction
- > Steel toe cap - 200 joules
- > Water-resistant leather upper
- > Recycled polyester lining
- > Metal-free, antistatic
- > Weight per shoe: 665 grams (based on size 42)

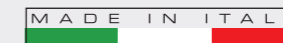


BERGAMO

Unisex: 72450 Black 3-12 (36-47)

EN ISO 20345:2022 [S3L HRO FO SR ESD]

- > Removable cushioned insole (recycled)
- > Energy absorbing heel construction
- > Heat resistant outsole up to 300 °C
- > Composite toe cap - 200 joules
- > Puncture resistant
- > Water resistant knitted upper
- > Metal-free
- > Antistatic
- > Resistant to fuel oil
- > Weight per shoe: 615 grams (based on size 42)



CATANIA

Unisex: 72444 Black 3-12 (36-47)
72445 White 3-12 (36-47)

EN ISO 20345:2022 [S3L HRO FO SR]

- > Removable cushioned insole
- > Energy absorbing heel construction
- > Heat resistant outsole up to 300 °C
- > Composite toe cap - 200 joules
- > Puncture resistant
- > Water resistant microfibre upper
- > Metal-free
- > Antistatic
- > Resistant to fuel oil
- > Weight per shoe: 560 grams (based on size 42)





ENGINEER IV CT

Unisex: 76737 Black 3-13 (36-48)

EN ISO 20345:2022 [S7L SR LG]

- > Removable cushioned insole (recycled EVA)
- > Energy absorbing heel construction
- > Composite toe cap - 200 joules
- > Puncture resistant
- > TripGuard
- > Clog-resistant outsole
- > Waterproof coated leather upper
- > Recycled polyester lining
- > Metal-free, antistatic
- > Easy to clean
- > Weight per shoe: 718 grams (based on size 41)



INNY

Unisex: 74893 White 3-13 (36-48)

EN ISO 20345:2022 [S3L FO SR]

- > Regular fit
- > Removable cushioned insole (recycled EVA)
- > Superior slip- and clog-resistant outsole with TripGuard
- > Energy absorbing heel construction
- > Composite toe cap - 200 joules
- > Puncture resistant
- > Waterproof, recycled microfibre upper
- > Recycled polyester lining
- > Metal-free, antistatic
- > Resistant to fuel oil
- > Vegan
- > Weight per shoe: 598 grams (based on size 42)



CAMBRIDGE II ST

Unisex: 52151 Black 5-13 (38-48)

EN ISO 20345:2022 [S2 FO SR]

- > Removable cushioned insole (recycled EVA)
- > Energy absorbing heel construction
- > Steel toe cap - 200 joules
- > Waterproof, recycled microfibre upper
- > Recycled polyester lining
- > Easy to clean
- > Metal-free, antistatic
- > Vegan
- > Weight per shoe: 525 grams (based on size 44)



FORKHILL

Unisex: 79112 Black 3-13 (36-48)

EN ISO 20345:2022 [S3L SR LG]

- > Regular fit
- > Removable cushioned insole (recycled EVA)
- > Superior slip- and clog-resistant outsole with TripGuard
- > Energy absorbing heel construction
- > Composite toe cap - 200 joules
- > Puncture resistant
- > Waterproof, recycled microfibre upper
- > Recycled polyester lining
- > Metal-free, antistatic
- > Weight per shoe: 585 grams (based on size 44)



Durable and hardworking, comfortable for the whole shift.



RUNNING, WALKING, STANDING – THE ATHLETIC RANGE DOES IT ALL AND GETS YOU COMFORTABLY THROUGH THE DAY.

All Athletic designs have a cushioned, removable insole and are engineered with our extremely slip-resistant outsole.



FREESTYLE II MEN | LIBERTY II WOMEN

| | | |
|------------|-------------------|---------------|
| Men: | 38140 Black | 5-15 (38-50) |
| | 32835 Black/white | 5-15 (38-50) |
| Women: | 37255 Black | 2-9 (34-43) |
| | 35353 Black/white | 2.5-8 (35-42) |
| ECO Men: | 32302 Black | 5-13 (38-48) |
| ECO Women: | 32301 Black | 2.5-8 (35-42) |

- > Padded collar and tongue
- > Removable cushioned insole (recycled EVA)
- > Slip-resistant outsole with large lug pattern
- > Lightweight and durable synthetic upper
- > Water repellent upper
- > Recycled polyester lining
- > Metal-free
- > Vegan
- > Weight per shoe: 345 grams (based on size 42)

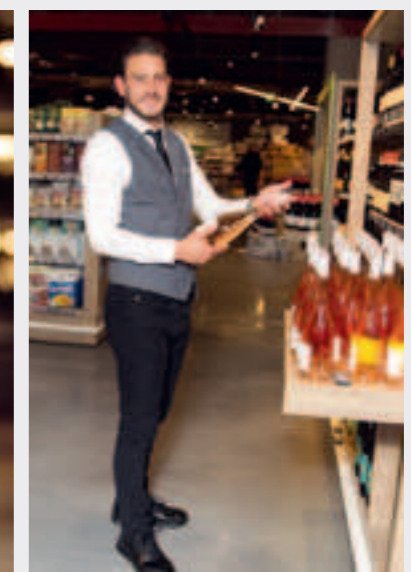


CONDOR II

| | | |
|---------|-------------|----------------|
| Unisex: | 22270 Black | 2.5-13 (35-48) |
| | 22336 White | 2.5-13 (35-48) |

EN ISO 20347:2012 [OB E SRC ESD]

- > Padded collar and tongue
- > Removable cushioned insole (recycled EVA)
- > Energy absorbing heel construction
- > Soft leather upper with protective membrane against spills
- > Water repellent
- > Recycled polyester lining
- > Metal-free
- > Wider heel for comfort and traction
- > Stable and durable style
- > Weight per shoe: 471 grams (based on size 43)





COLLY SOFT TOE

Unisex: 65659 Black 3-13 (36-48)

EN ISO 20347:2022 [OB E FO SR]

- > Padded collar and tongue
- > Removable cushioned insole (recycled EVA)
- > Energy absorbing heel construction
- > Clog-resistant outsole with TripGuard
- > Water-resistant upper made from recycled polyester and recycled microfibre
- > Polyester lining
- > Metal-free, antistatic, vegan
- > Resistant to fuel oil
- > Weight per shoe: 384 grams (based on size 42)



ENDURANCE II MEN | VITALITY II WOMEN

Men: 22782 Black 5.5-15 (39-50)

Women: 28362 Black 2.5-8 (35-42)
24759 Blue/grey 2.5-8 (35-42)

- > Removable cushioned insole (recycled EVA)
- > Flexible outsole with TripGuard
- > Lightweight with great ventilation
- > Synthetic mesh with membrane against spills
- > Water repellent
- > Recycled polyester lining
- > Metal-free
- > Vegan
- > Weight per shoe: 240 grams (based on size 42)



EVOLUTION II MEN | REVOLUTION II WOMEN

Men: 21211 Black 5-15 (38-50)

28289 White 5-14 (38-49)

Women: 29167 Black 2.5-8 (35-42)
28093 White 2.5-8 (35-42)

- > Removable cushioned insole (recycled EVA)
- > Outsole with airbag for extra support
- > Seamless, easy-to-clean single-piece construction
- > Synthetic mesh upper for cool feet
- > Water repellent
- > Recycled polyester lining
- > Metal-free
- > Vegan
- > Weight per shoe: 390 grams (based on size 42)



Even on longer days the Athletic range will go with you, all the way to the end.



EVERLIGHT

Men: 22273 Black 6-12 (39-47)

22274 White 6-12 (39-47)

Women: 22272 Black 2.5-8 (35-42)
22275 White 2.5-8 (35-42)

EN ISO 20347:2022 [OB E SR]

ECO Men: 22337 Black 5-13 (38-48)

22338 Black/grey 5-13 (38-48)

ECO Women: 22330 Black 2.5-8 (35-42)
22331 Black/grey 2.5-8 (35-42)

- > Lightweight foam technology in the midsole for high cushioning comfort and comfortable wearing
- > Removable cushioned insole (recycled EVA)
- > Energy absorbing heel construction
- > Flexible outsole with TripGuard against falls
- > Easy cleaning outsole
- > Breathable knitted upper
- > Recycled polyester lining
- > Metal-free
- > Vegan
- > Weight per shoe: 191 grams (based on size 38)



A shoe that you can hardly feel: Everlight is breathable, lightweight and carries you comfortably through strenuous days.





SHOES FIT FOR PURPOSE, FROM MORNING TO NIGHT: COMFORT UNDERFOOT AND IN A CASUAL STYLE

Our casual designs are lightweight with a cushioned, removable insole. They are fit for purpose all day long thanks to the comfort and our highly slip-resistant outsole.



OLD SCHOOL IV

Unisex: 36111 Black 2.5-12 (35-47)
38960 White 3-12 (36-47)

EN ISO 20347:2022 [OB E SR]

- > Removable cushioned insole (recycled EVA)
- > Double-thick insole with deep cushioning
- > Coated leather upper
- > Water repellent
- > Recycled polyester lining, metal-free
- > Weight per shoe: 380 grams (based on size 42)



RADIUM

Unisex: 69578 Black 4-12 (37-47)

EN ISO 20347:2022 [OB E SR]

- > Removable cushioned insole (recycled EVA)
- > Energy absorbing heel construction
- > Tapered outsole minimises risk of tripping
- > Lightweight and durable EVA material
- > Metal-free, vegan
- > Water resistant material
- > Weight per shoe: 278 grams (based on size 38)



ZINC

Unisex: 66064 Black 4-13 (37-48)
62138 White 4-13 (37-48)

EN ISO 20347:2022 [OB E SR]

- > Different traction patterns across the slip-resistant outsole appropriate for the job, work surface and environment
- > Energy absorbing heel construction
- > Extralight, durable EVA material
- > Metal-free, vegan
- > Water resistant material
- > Weight per shoe: 272 grams (based on size 38)



TRISTON II

Unisex: 80047 Black 3-12 (36-47)
80048 White 3-12 (36-47)

EN ISO 20347:2022 [OB E SR]

- > Removable cushioned insole (recycled EVA)
- > Clog-resistant outsole
- > Energy absorbing heel construction
- > Water resistant, recycled microfibre upper
- > Recycled polyester lining
- > Metal-free, vegan
- > Weight per shoe: 480 grams (based on size 42)



TRISTON II SB

Unisex: 80045 Black 3-12 (36-47)
80046 White 3-12 (36-47)

EN ISO 20345:2022 [SB E SR]

- > Removable cushioned insole (recycled EVA)
- > Composite toe cap - 200 joules
- > Clog-resistant outsole
- > Energy absorbing heel construction
- > Water resistant, recycled microfibre upper
- > Recycled polyester lining
- > Metal-free
- > Weight per shoe: 429 grams (based on size 44)





DELRAY

- Unisex: 38649 Black 2.5-12 (35-47)
- > Removable cushioned insole (recycled EVA)
 - > Tapered outsole helps to minimise risk of tripping
 - > Re-designed slip-resistant rubber outsole
 - > Full grain natural leather upper
 - > Recycled polyester lining
 - > Metal-free
 - > Water resistant upper
 - > Weight per shoe: 430 grams (based on size 42)



SALOON II

- Men: 43261 Black 5-15 (38-50)
 Women: 47808 Black 2.5-8 (35-42)
- EN ISO 20347:2022 [OB E SR]
- ECO Men: 42340 Black 5-13 (38-48)
 ECO Women: 42337 Black 2.5-8 (35-42)
- > Removable cushioned insole (recycled EVA)
 - > Superior slip-resistant outsole with TripGuard
 - > Energy absorbing heel construction
 - > Full grain natural leather upper
 - > Recycled polyester lining
 - > Metal-free
 - > Water resistant upper
 - > Easy to clean
 - > Weight per shoe: 451 grams (based on size 42)



MERLIN

- Unisex: 42215 Black & White 2.5-12 (35-47)
 42224 Black 2.5-12 (35-47)
- > Lightweight with padded collar
 - > Removable cushioned insole (recycled EVA)
 - > Water-resistant leather upper
 - > Recycled polyester lining
 - > Metal-free
 - > Weight per shoe: 340 grams (based on size 42)



CATER II

- Men: 41439 Black 5-15 (38-50)
 Women: 40187 Black 2.5-8 (35-42)
- EN ISO 20347:2022 [OB E SR]
- ECO Men: 42338 Black 5-13 (38-48)
 ECO Women: 42341 Black 2.5-8 (35-42)
- > Padded collar
 - > Removable cushioned insole (recycled EVA)
 - > Energy absorbing heel construction
 - > Water-resistant upper
 - > Recycled polyester lining
 - > Metal-free
 - > Weight per shoe: 426 grams (based on size 42)



KARINA

- Women: 36907 Black 2.5-9 (35-43)
 32709 White 2.5-8 (35-42)
- > Removable cushioned insole (recycled EVA)
 - > Lightweight with extra cushioning
 - > Easy-lacing system
 - > Synthetic upper
 - > Recycled polyester lining
 - > Metal-free
 - > Water resistant upper
 - > Vegan
 - > Weight per shoe: 230 grams (based on size 38)



FINN MEN | MAVI WOMEN

- Men: M11057 Black 6-12 (39-47)
 Women: M31174 Black 2.5-9 (35-43)
- EN ISO 20347:2012 [OB E SRC]
- > Elastic goring for a slip-on style
 - > Optional laces for a classic sneaker look
 - > Removable cushioned insole (recycled EVA)
 - > Energy absorbing heel construction
 - > Three-hole arch ventilation for breathability
 - > Water-resistant, full-grain leather upper
 - > Recycled polyester lining
 - > Metal-free
 - > Easy to clean, treated with 3M Scotchgard™ Protector
 - > Weight per shoe: 448 grams (based on size 42)



JASMINE

- Women: 51905 Black 2.5-8 (35-42)
- > Lightweight design
 - > Easy slip-on style
 - > Dual density memory foam insole provides step-in comfort that lasts all day
 - > Removable cushioned insole (recycled EVA)
 - > Extra cushioning
 - > Water-resistant leather upper
 - > Recycled polyester lining
 - > Metal-free
 - > Weight per shoe: 200 grams (based on size 38)



GRIND MEN | MAVEN WOMEN

- Men: M31165 Black 6-12 (39-47)
 Women: M30390 Black 2.5-9 (35-43)
- EN ISO 20347:2012 [OB E SRC]
- > Removable cushioned insole (recycled EVA)
 - > Elastic goring for a slip-on style
 - > Optional laces for a classic sneaker look
 - > Energy absorbing heel construction
 - > Three-hole arch ventilation for breathability
 - > Water-repellent, waxed denim upper
 - > Recycled polyester lining
 - > Metal-free, vegan
 - > Easy to clean, treated with 3M Scotchgard™ Protector
 - > Weight per shoe: 420grams (based on size 42)





MORE THAN JUST SMART: OUR DRESS STYLES GET YOU COMFORTABLY THROUGH THE DAY.

They look professional and allow you to stand on your own two feet for hours on end with no restrictions: This epitomises our dress designs. We use supple materials, innovative padding and cushioning – all with an easy to clean finish.



CAMBRIDGE III

Men: 20321 Black 5-14 (38-49)

EN ISO 20347:2022 [OB SR]

- > Classic professional style
- > Padded comfort collar
- > Removable cushioned insole (recycled EVA)
- > 360° stitch-reinforced outsole
- > Water-resistant leather upper
- > Recycled polyester lining
- > Metal-free
- > Weight per shoe: 360 grams (based on size 42)



EXECUTIVE WING TIP IV

Men: 20301 Black 5-12 (38-47)

EN ISO 20347:2022 [OB SR]

- > Removable cushioned insole (recycled EVA)
- > Water-resistant leather upper
- > Recycled polyester lining
- > Metal-free
- > Weight per shoe: 350 grams (based on size 42)



MARY JANE II

Women: 3002 Black 2.5-9.5 (35-44)

EN ISO 20347:2022 [OB SR]

- > Removable cushioned insole (recycled EVA)
- > Comfort fitting with adjustable strap
- > Water-resistant leather upper
- > Recycled polyester lining
- > Metal-free
- > Weight per shoe: 310 grams (based on size 38)





AMBASSADOR II

Men: 20331 Black 5-12 (38-47)
 EN ISO 20347:2022 [OB SR]
 > Removable cushioned insole (recycled EVA)
 > Padded collar
 > Water-resistant leather upper
 > Recycled polyester lining
 > Metal-free
 > Weight per shoe: 350 grams (based on size 42)



MADISON III

Women: 57889 Black 2.5-8 (35-42)
 EN ISO 20347:2022 [OB SR]
 > Removable cushioned insole (recycled EVA)
 > Heel height 2.5 cm
 > Water-resistant leather upper
 > Recycled polyester lining
 > Metal-free
 > Weight per shoe: 248 grams (based on size 38)



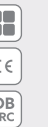
WILLA

Women: 55452 Black 2.5-8 (35-42)
 EN ISO 20347:2022 [OB SR]
 > Removable cushioned insole (recycled EVA)
 > Steel shank
 > Heel height 3.8 cm
 > Water-resistant leather upper
 > Recycled polyester lining
 > Weight per shoe: 266 grams (based on size 38)



REESE

Women: 57160 Black 2.5-8 (35-42)
 EN ISO 20347:2012 [OB SRC]
 > Tailored fit style with extra cushioning
 > Removable cushioned insole (recycled EVA)
 > Hollow in the heel allows pressure to escape with each step
 > Heel height 1.2 cm
 > Water-resistant leather upper
 > Recycled polyester lining
 > Metal-free
 > Weight per shoe: 241 grams (based on size 38)



SENATOR

Men: 1201 Black 5-12 (38-47)
 1211 Brown 6-12 (39-47)
 > Removable cushioned insole (recycled EVA)
 > Padded collar
 > Cushioned footboard with leather-lined insole
 > Water-resistant leather upper
 > Recycled polyester lining
 > Metal-free
 > Weight per shoe: 385 grams (based on size 42)



A pain-free day: Thanks to supple materials and innovative cushioning technology.





STATESMAN

- Men: 1202 Black 6-12 (39-47)
- > Removable cushioned insole (recycled EVA)
 - > Padded collar
 - > Cushioned footboard with leather-lined insole
 - > Water-resistant leather upper
 - > Recycled polyester lining
 - > Metal-free
 - > Weight per shoe: 345 grams (based on size 42)



ARISTOCRAT IV

- Men: 20311 Black 5-12 (38-47)
- EN ISO 20347:2022 [OB SR]
- > Removable cushioned insole (recycled EVA)
 - > Water-resistant leather upper
 - > Recycled polyester lining
 - > Metal-free
 - > Weight per shoe: 350 grams (based on size 42)



JENNI

- Women: 3616 Black 2.5-8 (35-42)
3616W Black wide 2.5-8 (35-42)
- EN ISO 20347:2022 [OB SR]
- > Removable cushioned insole (recycled EVA)
 - > Heel height 1.2 cm
 - > Water-resistant leather upper
 - > Recycled polyester lining
 - > Metal-free
 - > Weight per shoe: 280 grams (based on size 38)



KORA

- Women: 52152 Black 2.5-8 (35-42)
- > Slim fit
 - > Removable cushioned insole (recycled EVA)
 - > Superior slip-resistant outsole with TripGuard
 - > Energy absorbing heel construction
 - > Heel height 2.5 cm
 - > Water-resistant leather upper with laser etched details
 - > Recycled polyester lining
 - > Metal-free
 - > Weight per shoe: 270 grams (based on size 38)



ENVY III

- Women: 52263 Black 2.5-8 (35-42)
52263W Black wide 2.5-8 (35-42)
55861 Brown 3-8 (36-42)
- EN ISO 20347:2022 [OB SR]
- > Removable cushioned insole (recycled EVA)
 - > Steel shank
 - > Shock absorbing rubber heel
 - > Heel height 3.8 cm
 - > Water-resistant leather upper
 - > Recycled polyester lining
 - > Weight per shoe: 245 grams (based on size 38)





NO NEED TO WORRY ABOUT THE WET OR DIRT.

Our wellingtons can do so much more: Keep liquids at bay. Protect against extreme cold temperature. And protect your toes from anything falling down.



BASTION

Unisex: 76690 White/blue 4-12 (37-47)
70557 Green 4-12 (37-47)

EN ISO 20345:2011 [S4 SRC FO]

- > Ventilated to keep your feet cool
- > Energy absorbing heel construction
- > Steel toe cap - 200 joules
- > PVC upper and outsole
- > 40 cm tall waterproof boot
- > Vegan, antistatic
- > Weight per shoe: 1,200 grams (based on size 38)



GUARDIAN

Unisex: 2017B White/blue 4-13 (37-48)
2018 Green 4-13 (37-48)

EN ISO 20345:2011 [S4 SRC FO]

- > Removable cushioned insole (recycled EVA)
- > Energy absorbing heel construction
- > Steel toe cap - 200 joules
- > PVC upper
- > Clog-resistant SFC-outsole
- > 40 cm tall waterproof boot
- > Vegan, antistatic
- > Weight per shoe: 840 grams (based on size 38)



SENTINEL

Unisex: 2010B White/blue 3-11 (36-46)
2011 Green 3-11 (36-46)
2012 Blue 3-11 (36-46)

EN ISO 20345:2011 [S4 SRC FO]

- > Removable cushioned insole (recycled EVA)
- > Energy absorbing heel construction
- > Steel toe cap - 200 joules
- > Insulation provides protection at temperatures as low as -20 °C
- > Polyurethane (PU) upper
- > Clog-resistant SFC-outsole
- > 36 cm waterproof boot
- > Vegan, antistatic
- > Weight per shoe: 575 grams (based on size 38)



The Sentinel is 36 cm high. The insulation protects against cold temperatures right down to -20 °C.





CREWGUARD® STRETCH

Unisex: G7014 Black S-XL

EN ISO 20347:2022 [SR FO]

- > Fits snugly and securely over almost any pair of work shoes
- > SFC mighty grip slip-resistant sole provides maximum slip and fall protection
- > Ideal for anyone not already wearing our top-rated footwear
- > Water repellent against spills
- > Metal-free



CREWGUARD® SAFETY

Unisex: 53 Black XS-XXL

EN ISO 20345:2022 [SR FO TOE-PROTECTION]

- > Steel toe cap - 200 joules
- > Fits snugly and securely over almost any pair of work shoes
- > SFC mighty grip slip-resistant sole provides maximum slip and fall protection
- > Ideal for anyone not already wearing our top-rated footwear
- > Water repellent against spills



SIZE TABLE

| Size | XS | S | S+ | M | M+ | L | XL | XXL |
|------------|-------|-------|-------|-------|-------|---------|---------|-------|
| Stretch EU | | 34-36 | | 37-41 | | 41.5-45 | 45.5-47 | |
| Stretch UK | | 2-3 | | 4-7 | | 7.5-10 | 10.5-12 | |
| Safety EU | 35-37 | 37-38 | 39-41 | 41-42 | 43-44 | 44-45 | 46-48 | 49-51 |
| Safety UK | 2.5-4 | 4-5 | 6-7 | 7-8 | 9-9.5 | 9.5-10 | 11-13 | 14-16 |



Damp or greasy under foot?
No problem with Crewguards®.

JUST PULL IT ON OVER YOUR OTHER FOOTWEAR FOR PEACE OF MIND.

Crewguards® are overshoes offering quick, temporary protection. Also available with toe protection. Water repellent and slip resistant in any case.



DO YOU NEED MORE COMFORT OR A REPLACEMENT?
THAT'S WHAT OUR ACCESSORIES ARE FOR.

Every insole wears out at some point. Choose more comfortable soles or a second sole to change. Choose matching, sustainable socks made from Merino wool or recycled materials.



COMFORT INSOLES

- Unisex: N3411 4-15 (37-50)
- > Adaptable arch allows foot to react to natural movements
 - > EVA cushioning layer



COMFORT INSOLES WITH GEL

- Unisex: N2114 4-13 (37-48)
- > The cuddly arch follows the natural movement of the feet
 - > Shock-absorbing gel pads for maximum comfort
 - > Polyurethane padding



SFC CREW SOCKS

- | | | |
|-------------------------------|-------------|------|
| Unisex sock recycled material | S2307 Black | S-XL |
| Unisex sock merino wool | S2308 Black | S-XL |
- > **Recycled material sock:** Made with 100% recycled polyester material
 - > Extra cushioning throughout the sock
 - > Extra elastic in leg and arch band
 - > **Merino sock:** Blend of 38% merino wool, 38% polyester, 22% polyamide and 2% elasthane
 - > Extra cushioning in all the sock
 - > Extra elastic in leg and arch band
 - > Nylon reinforcement in toe and heel

SFC NO-SHOW SOCKS

- | | | |
|-------------------------------|-------------|------|
| Unisex sock recycled material | S2305 Black | S-XL |
| Unisex sock merino wool | S2306 Black | S-XL |
- > **Recycled material sock:** Made with 100% recycled polyester material
 - > Extra cushioning in the footbed
 - > Extra elastic in cuff and arch band
 - > **Merino sock:** Blend of 53% merino wool, 45% polyamide, 2% elasthane
 - > Ultralight sock, no cushioning
 - > Extra elastic in cuff and arch band
 - > Nylon reinforcement in toe and heel

SIZE TABLE SOCKS

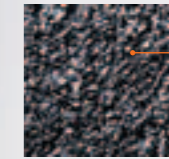
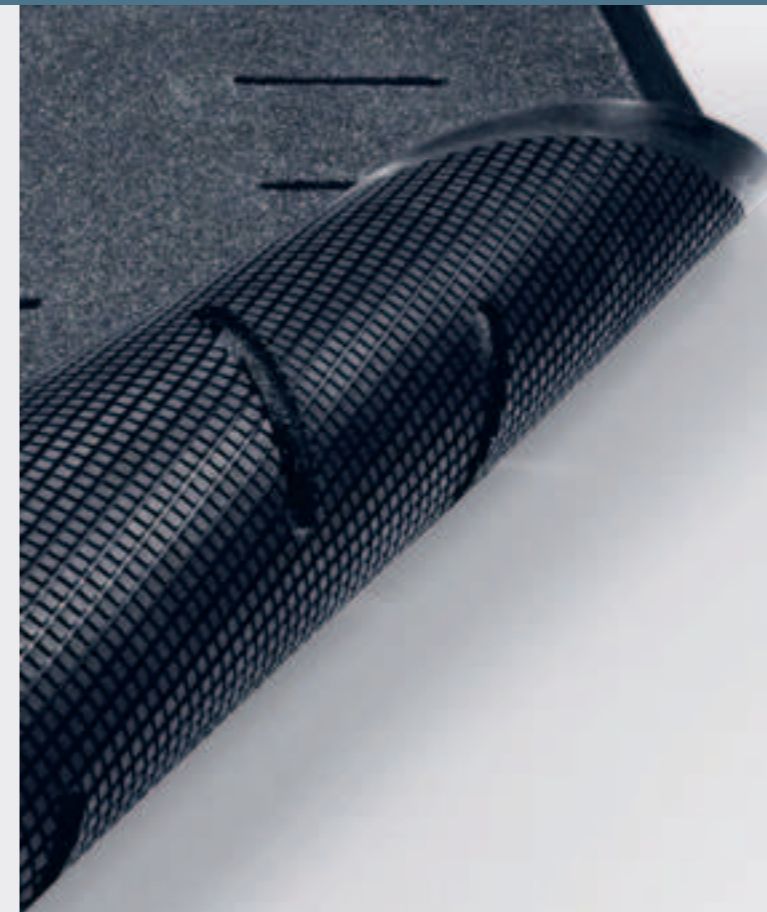
| Size | S | M | L | XL |
|---------------|---------|---------|---------|-------|
| EU Size | 35-38 | 39-42 | 43-46 | 47-50 |
| US Size men | 5-7 | 7.5-9.5 | 10-12.5 | 13-15 |
| US Size women | 6-8.5 | 9-11 | 11.5+ | - |
| UK Size | 3.5-5.5 | 6-8 | 8.5-12 | 12.5+ |



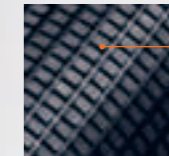


DO YOU FEEL COMFORTABLE AND SAFE ON YOUR OWN TWO FEET? IF NOT, TAKE A LOOK AT OUR MIGHTY MATS®.

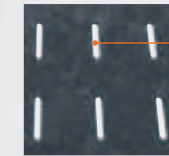
Move around more nimbly and efficiently with both feet firmly on the mat. Thanks to our slip-resistant floor mats, transform any greasy, slippery surface into a surface with unprecedented grip.



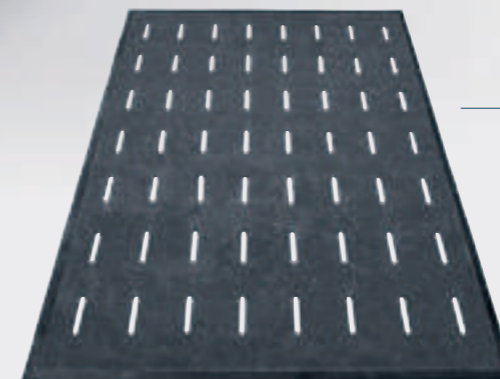
Non-slip surface for safe footing.



Non-slip SFC underlay keeps the mat firmly and securely in place.



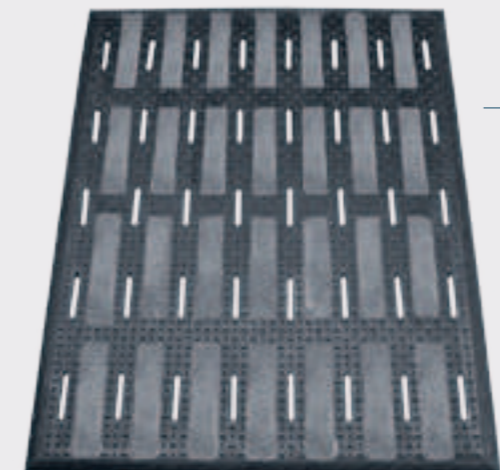
Perforations allow liquids to drain downwards from the surface.



MIGHTY MAT® CLASSIC

20 Black 91.44 x 152.40 cm

- > High traction, slip-resistant surface
- > Patented slip-resistant rubber base
- > All grip upper with serrated edge for added durability
- > Height: 6.5 mm – fits under doorways



MIGHTY MAT® MAX II

40 Black 91.44 x 121.92 cm

- > High traction, slip-resistant surface
- > Rubberised diamond plate pattern
- > Patented slip-resistant rubber base and grid pattern
- > Anti-fatigue cushion provides all-day comfort
- > Height: 14.8 mm



PURCHASING TIPS



CORRECTLY FITTING FOOTWEAR MAKES A DIFFERENCE.

Long days are standard practice. That's why it's important to have perfectly fitting footwear to allow you to move around comfortably, that is easy on your feet and joints and therefore makes your day easier.

COMFORT FIRST. THE RIGHT SIZE. A GOOD FIT.

WHICH SHOE SHOULD YOU CHOOSE?

Do I need a comfortable shoe that allows me to cover many kilometres every day without experiencing tired legs in the evening? Am I exposed to liquids? Or do I need to look smart but also wear a safety shoe while on shift?

Our purchasing guide explains the key safety norms as well as product features and provides a table of international shoe sizes for comparison.

OCCUPATIONAL FOOTWEAR CLASSES

| | OB | O1 | O2 | O3 | O4 | O5 | O6 | O7 |
|--|----|----|----|----|----|----|----|----|
| Slip-resistance standard requirements | ■ | ■ | ■ | ■ | ■ | ■ | ■ | ■ |
| Closed seat area (fully enclosed heel) | ■ | ■ | ■ | ■ | ■ | ■ | ■ | ■ |
| Antistatic footwear | | ■ | ■ | ■ | ■ | ■ | ■ | ■ |
| Energy absorption of heel area | | ■ | ■ | ■ | ■ | ■ | ■ | ■ |
| No water penetration | | | ■ | ■ | ■ | ■ | ■ | ■ |
| Water resistant footwear | | | | | ■ | ■ | ■ | ■ |
| Penetration-resistant outsole | | | | ■ | | ■ | | ■ |

SAFETY FOOTWEAR CLASSES

| | SB | S1 | S1P | S1PL | S1PS | S2 | S3 | S3L | S3S | S4 | S5 | S5L | S6 | S7 | S7L |
|---|----|----|-----|------|------|----|----|-----|-----|----|----|-----|----|----|-----|
| Toe cap (resisting 200 Joules) | ■ | ■ | ■ | ■ | ■ | ■ | ■ | ■ | ■ | ■ | ■ | ■ | ■ | ■ | ■ |
| Slip-resistance standard requirements | ■ | ■ | ■ | ■ | ■ | ■ | ■ | ■ | ■ | ■ | ■ | ■ | ■ | ■ | ■ |
| Closed seat area (fully enclosed heel) | | ■ | ■ | ■ | ■ | ■ | ■ | ■ | ■ | ■ | ■ | ■ | ■ | ■ | ■ |
| Antistatic footwear | | ■ | ■ | ■ | ■ | ■ | ■ | ■ | ■ | ■ | ■ | ■ | ■ | ■ | ■ |
| Energy absorption of heel area | | ■ | ■ | ■ | ■ | ■ | ■ | ■ | ■ | ■ | ■ | ■ | ■ | ■ | ■ |
| No water penetration | | | | | | | ■ | ■ | ■ | ■ | ■ | ■ | ■ | ■ | ■ |
| Water resistance | | | | | | | | | | | ■ | ■ | ■ | ■ | ■ |
| Anti-puncture protection metal insert | | | | ■ | | | | ■ | | | ■ | | ■ | ■ | ■ |
| Anti-puncture protection non-metal insert | | | | | ■ | | | | ■ | ■ | | | ■ | | ■ |

SIZE TABLE

| Men | |
|---------|---|
| EU Size | 38 39 40 41 42 43 44 45 46 47 48 49 50 |
| UK Size | 5 6 6.5 7 8 9 9.5 10 11 12 13 14 15 |
| US Size | 6 7 7.5 8 9 10 10.5 11 12 13 14 15 16 |
| Women | |
| EU Size | 35 36 37 38 39 40 41 42 43 |
| UK Size | 2.5 3 4 5 6 6.5 7 8 9 |
| US Size | 5 5.5 6.5 7.5 8.5 9 9.5 10 11 |
| Unisex | |
| EU Size | 35 36 37 38 39 40 41 42 43 44 45 46 47 48 49 50 |
| UK Size | 2.5 3 4 5 6 6.5 7 8 9 9.5 10 11 12 13 14 15 |
| US Size | 3.5 4 5 6 7 7.5 8 9 10 11 11 12 13 14 15 16 |



SHOES
FOR CREWS™

STEP
INTO
ACTION™



04/2024

